

# MONTHLY MEMBERSHIP PROGRESS REPORT

LOCATION VIRGINIA

District 24 L

Results as of: 5/31/2023

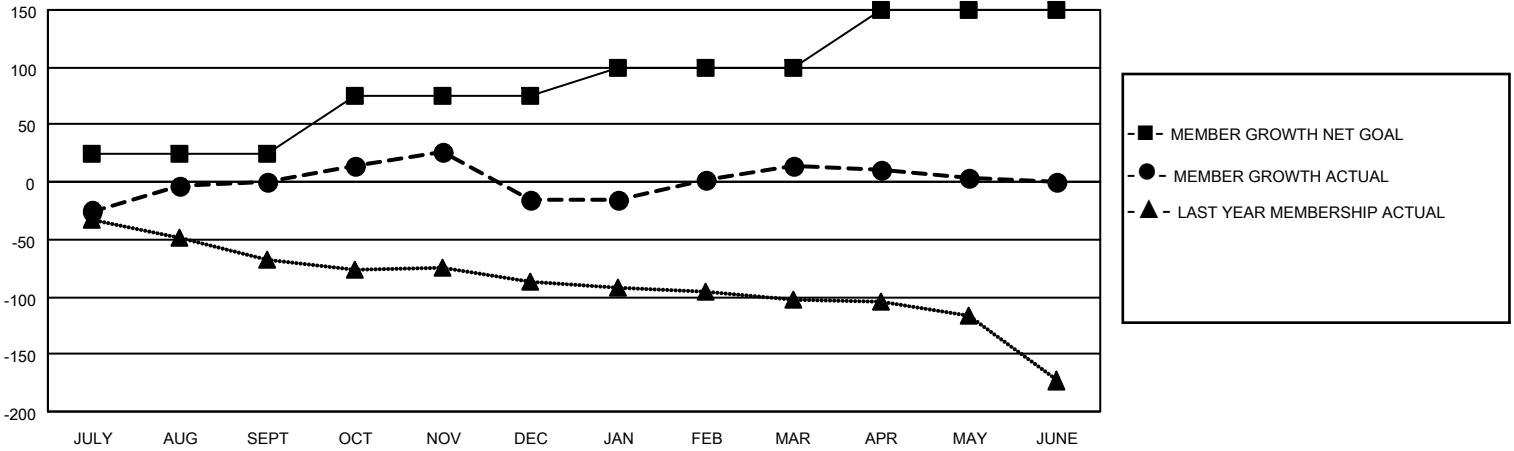
Clubs			
RESULTS FOR 2022-2023			
QUARTER	NEW CLUB GOAL	NEW CLUBS	DROPPED CLUBS
JULY/AUG/SEPT	0	0	1
OCT/NOV/DEC	0	0	2
JAN/FEB/MAR	1	0	0
APR/MAY/JUNE	1	0	0

Members			
RESULTS FOR 2022-2023			
QUARTER	MEMBER GROWTH NET GOAL	MEMBER GROWTH ACTUAL	DROPPED MEMBERS ACTUAL (including transfers)
JULY/AUG/SEPT	25	84	70
OCT/NOV/DEC	50	77	92
JAN/FEB/MAR	25	101	55
APR/MAY/JUNE	50	44	52

**GOALS AND ACTUAL NEW CLUBS CUMULATIVE**



**GOALS AND ACTUAL MEMBERS CUMULATIVE**



DROPPED CLUBS: 3	
<u>DROPPED MEMBERS</u>	
DECEASED	40
CLUB CANCELLED	26
OTHER	203
<b>TOTAL</b>	<b>269</b>

57 CLUBS OF 89 ADDED 1 OR MORE NEW MEMBERS

[CLICK HERE FOR CUMULATIVE MEMBERSHIP DATA](#)

<u>GENDER DISTRIBUTION</u>	
MALE	1,477 (61.46%)
FEMALE	926 (38.54%)
NON BINARY	0 (0.00%)
PREFER NOT TO ANSWER	0 (0.00%)
<b>TOTAL FAMILY UNIT MEMBERS</b>	<b>435</b>
<b>FAMILY MEMBERS PAYING HALF DUES</b>	<b>219</b>